

Possible combinations of the power supply units 5/NT

A 12 V power supply unit is required to supply the LUNOS fans and LUNOS controllers. LUNOS offers a power supply unit for the flush-mounted box and two variants for top-hat rail mounting. The required power results from the number of fans connected / used (see chart).

If the power consumption is higher than 60 watts, at least 2 control units must be separate supply lines from the power supply unit.

We recommend a separate control circuit for each ego or RA 15-60.

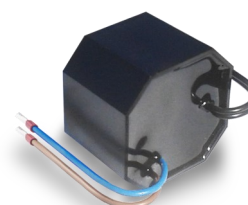
with 5/NT18
6 (3 pairs) e ² + 0 e ⁹⁰ + 0 RA
4 (2 pairs) e ² + 1 e ⁹⁰ + 0 RA
2 (1 pairs) e ² + 2 e ⁹⁰ + 0 RA
0 e ² + 3 e ⁹⁰ + 0 RA
0 e ² + 0 e ⁹⁰ + 1 RA

with 5/NT60
10 (5 pairs) e ² + 0 e ⁹⁰ + 0 RA
8 (4 pairs) e ² + 1 e ⁹⁰ + 0 RA
6 (3 pairs) e ² + 2 e ⁹⁰ + 0 RA
4 (2 pairs) e ² + 3 e ⁹⁰ + 0 RA
2 (1 pairs) e ² + 4 e ⁹⁰ + 0 RA
0 (0 pairs) e ² + 5 e ⁹⁰ + 0 RA
6 (3 pairs) e ² + 0 e ⁹⁰ + 1 RA
4 (2 pairs) e ² + 1 e ⁹⁰ + 1 RA
2 (1 pairs) e ² + 2 e ⁹⁰ + 1 RA
0 (0 pairs) e ² + 3 e ⁹⁰ + 1 RA
0 (0 pairs) e ² + 0 e ⁹⁰ + 2 RA

with 5/NT100*
20 (10 pairs) e ² + 0 e ⁹⁰ + 0 RA
18 (9 pairs) e ² + 1 e ⁹⁰ + 0 RA
16 (8 pairs) e ² + 2 e ⁹⁰ + 0 RA
14 (7 pairs) e ² + 3 e ⁹⁰ + 0 RA
12 (6 pairs) e ² + 4 e ⁹⁰ + 0 RA
10 (5 pairs) e ² + 5 e ⁹⁰ + 0 RA
8 (4 pairs) e ² + 6 e ⁹⁰ + 0 RA
6 (3 pairs) e ² + 7 e ⁹⁰ + 0 RA
4 (2 pairs) e ² + 8 e ⁹⁰ + 0 RA
2 (1 pairs) e ² + 9 e ⁹⁰ + 0 RA
0 (0 pairs) e ² + 10 e ⁹⁰ + 0 RA
14 (7 pairs) e ² + 0 e ⁹⁰ + 1 RA
12 (6 pairs) e ² + 1 e ⁹⁰ + 1 RA
10 (5 pairs) e ² + 2 e ⁹⁰ + 1 RA
8 (4 pairs) e ² + 3 e ⁹⁰ + 1 RA
6 (3 pairs) e ² + 4 e ⁹⁰ + 1 RA
4 (2 pairs) e ² + 5 e ⁹⁰ + 1 RA
2 (1 pairs) e ² + 6 e ⁹⁰ + 1 RA
0 (0 pairs) e ² + 7 e ⁹⁰ + 1 RA
8 (4 pairs) e ² + 0 e ⁹⁰ + 2 RA
6 (3 pairs) e ² + 1 e ⁹⁰ + 2 RA
4 (2 pairs) e ² + 2 e ⁹⁰ + 2 RA
2 (1 pairs) e ² + 3 e ⁹⁰ + 2 RA
0 (0 pairs) e ² + 4 e ⁹⁰ + 2 RA
0 (0 pairs) e ² + 0 e ⁹⁰ + 3 RA



Universal control



5/NT18



5/NT60



5/NT100

*The number of units listed under NT60 must not be exceeded per controller. In case of a larger number, another control unit must be used.