

## Smart Comfort Control 5/SC-FT

### Description and functions

The membrane keypad 5/SC-FT is used to control various LUNOS ventilation units. The alternative to the conventional manual or comfort control TAC provides different functions:

- Ventilation with heat recovery
- Exhaust air operation with the RA 15-60

Thanks to the integrated humidity and temperature sensor, there is an intelligent and automatic fan control available to ensure user-independent ventilation

based on the requirements of DIN 1946-6.

The intelligent automatic system also has protective functions such as the humidity and frost protection to counteract weather-related impairments and to ensure a minimum level of air quality.

In addition, the user has the possibility to operate the units manually and to activate comfort functions such as night-time reduction, summer mode or intensive ventilation.

### Installation

The operating element, the control unit and the corresponding power supply unit for voltage supply are required for operation. While the operating element and the control unit are supplied together, one of the three power supply units (18, 60 or 100 Watt) available at LUNOS can be selected separately.

Depending on the power supply, up to 20 e<sup>2</sup>, 10 e<sup>90</sup> or 3 RA15-60 can be connected.

The control and the 18 Watt power supply unit are installed in a flush-mounted standard switch box (90 mm deep).

The 60 or 100 Watt power supply unit is

installed on the top-hat rail.

The recommended installation height for comfortable operation is approximately 1.50 m from the top edge of finished floor.

A commercially available NYM cable (3 x 1.5 mm<sup>2</sup>) is sufficient for the voltage supply of 100 - 240 V AC.

More detailed information with regard to installation and electrical connection is provided in the installation manual. Please observe the installation manual and have the ventilator installed by a qualified professional.

#### Technical data

Input voltage:	12 V DC
Output voltage:	12 V DC
Functional voltage:	0-10 V
Operational switching current :	max. 5A
Connected load:	max. 60W
Dimensions in mm (W x H x D)	
Operating element:	88 x 88 x 11
Control unit:	42 x 42 x 26

#### Power supply units

Input voltage:	100-240 V AC
Output voltage:	12 V DC

Type	Power output	Order No.
5/NT18	18 Watt	039973
5/NT60	60 Watt	039974
5/NT100	100 Watt	040096

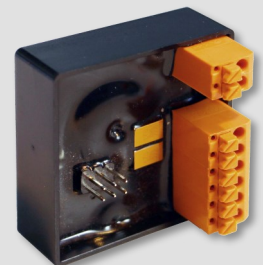
#### Further details

Brand:	LUNOS
Type:	5/SC-FT
Order No.:	040 113

Manufacturer's warranty: 2 years

#### Note

Products and illustrations may vary slightly.  
Due to continuous product development and/or several suppliers e.g. for raw materials, colours, among other things, may vary slightly or be shown differently in brochures.



E300 01.17 EN

Editing status: January 2017