

Outer Wall Air Vent ALD Built-In Device

Description and functions

The outer wall air vent ALD serves as a passive intake section for outside air for living and sleeping areas.

It is mainly used in combination with LUNOS exhaust air units of the Silvento series. The basic load operation of the exhaust fans in functional rooms such as bathroom and kitchen generates a constant negative pressure and, in this

way, fresh air is transported into the house via the ALD.

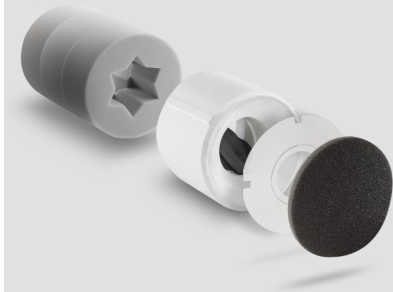
This ensures a user-independent ventilation according to DIN1946-6.

By means of the airflow regulator supplied, the air volume can also be reduced or adjusted for each living room or bedroom.

Installation

The built-in device is inserted into the wall-tube 9/R 160 (ø 160 mm) and with a slight incline outwards into the outer wall. An electrical connection is not required, since the ALD is not motorised.

Please observe the installation manual and have the outer wall air vent installed by a qualified professional.



Accessories

Wall-tubes	500 mm 9/R160 700 mm 9/R160-700
Inner screens	9/IBE 9/IBG 9/IBK
Sound absorbing screen	9/IBS
Sound absorber	9/SD 160 S
Replacement filters, Five-pack, G2	9/FIB-2
Regenerable replacement filters, Three-pack, G2	9/FIB-2R
Pollen filters, three-pack	9/FIB-P
Outer grille, round	white 1/WE180 red-brown 1/RE180 sanded 1/BE180
Outer hoods	white 1/HWE anthracite 1/HAZ
Wall installation housing	9/MRD
Assembly adhesive	

Technical data

Airflow volume	4,93; 7,54 and 12,27 m ³ /h at 2 Pa 10; 13,5 and 18 m ³ /h at 4 Pa 15; 20 and 25 m ³ /h at 8 Pa
Standard sound level difference	50 dB (with pipe length 360 mm) 53 dB (with pipe length 420 mm) 55 dB (with pipe length 500 mm)
Minimum installation length	240 mm

Further details

Included in the scope of delivery:
Three star-shaped sound absorbers,
airflow regulator, wind pressure relief with
EPS housing and washable G2 filter.

Brand	LUNOS
Type	ALD built-in device
Order No.	039 997

Manufacturer's warranty: 2 years

Note

Products and illustrations may vary slightly.
Due to continuous product development and/or several suppliers e.g. for raw materials, colours, among other things, may vary slightly or be shown differently in brochures.

E257 04.16 EN

Editing status: April 2016