

Outer Wall Air Vent ALD-S

Description and functions

The new outer wall air vent ALD-S provided with optimum sound insulation serves as a passive intake section for outside air for living and sleeping areas. It is mainly used in combination with LUNOS exhaust fans of the Silvento series.

The basic load operation of the exhaust fans in functional rooms such as bathroom and kitchen generates a constant negative pressure and, in this way, fresh air is transported into the house via the ALD-S. This ensures a user-independent ventilation according to DIN1946-6.

Installation

The built-in device is inserted into the wall-tube 9/R 160 (ø 160 mm) and with a slight incline outwards into the outer wall. An electrical connection is not required, since the ALD-S is a passive supply air element.

Please observe the installation manual and have the outer wall air vent installed by a qualified professional.

Accessories

Wall-tubes	500 mm 9/R160 700 mm 9/R160-700
Inner screens	9/IBE 9/IBG 9/IBK
Replacement filters, Five-pack, G2	9/FIB-2
Regenerable replacement filters, Three-pack, G2	9/FIB-2R
Pollen filters, Three-pack	9/FIB-P
Outer grilles, round	white 1/WE180 red-brown 1/RE180 sanded 1/BE180
Outer hoods	white 1/HWE anthracite 1/HAZ
Wall installation housing	9/MRD
Assembly adhesive	

Technical data

Airflow volume

2 Pa at 7m³/h
4 Pa at 10 m³/h
8 Pa at 15 m³/h

Standard sound level difference

55 dB with 360 mm, 9/IBE, 1/WE
58 dB with 360 mm, 9/IBE, 1/HWE
62 dB with 500 mm, 9/IBE, 1/WE
64 dB with 500 mm, 9/IBE, 1/HWE

Minimum installation length

180 mm

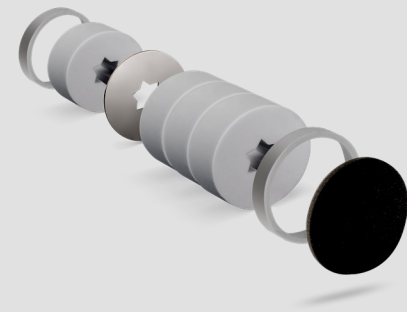
Further details

Included in the scope of delivery:
Four star-shaped sound absorbers,
sound reflector, two sound insulation
rings and one washable G2 filter.

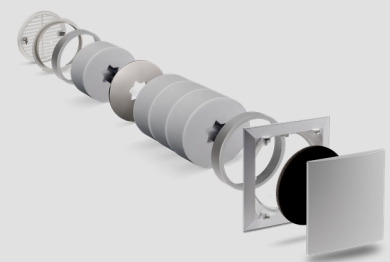
Brand LUNOS
Type ALD-S
Order No. 041 133
Manufacturer's warranty: 2 years

Note

Products and illustrations may vary slightly.
Due to continuous product development and/or several suppliers e.g. for raw materials, colours, among other things, may vary slightly or be shown differently in brochures.



Built-in device ALD-S



ALD-S

E299 03.17 EN