

Flush-Mounted Housing 3/UP-AS

Description

Housing for flush mounting made of UV-stable plastic and Styrofoam coating, suitable for outer wall installation with rear conical exhaust vent (DN 80-DN 75) and leakage-airtight backdraft shutter.

All ventilator inserts of the Silvento series can be inserted into the flush-mounted housing.

The housing is available in different thicknesses or can be extended to fit any existing wall thickness using Styrofoam adapter.

Versions available:

3/UP-AS10,7

Housing with rear exhaust vent and Styrofoam coating (107 mm depth), sound insulation, plaster protection cap and mains supply terminal

3/UP-A17,5

Same as 3/UP-AS10,7, additionally with wall duct 9/J30 and Styrofoam adapter to extend the above-mentioned housings by 53 mm each

Installation

The installation of the housing is made by flush finish on the wall and ventilation using the wall duct 9/J30 directly through the outer wall.

Please observe the installation manual - have the electrical connection of the fan performed by a qualified professional.

Accessories

Wall duct 9/J 30 (ø 98mm)
 Outer grille round
 white 1/WE 115
 red-brown 1/RE 115
 sanded 1/BE 115
 square sanded 1/J
 stainless steel 1/RME 150
 copper 1/RMK 150
 Styrofoam adapter

Technical data

Power supply 230 V AC 50 Hz
 Dimensions (W x H x D) in mm
 270 x 270 x (variable)
 Available static pressure
 227 Pa

The ventilation unit is provided with protective insulation; a protective conductor terminal is not required.

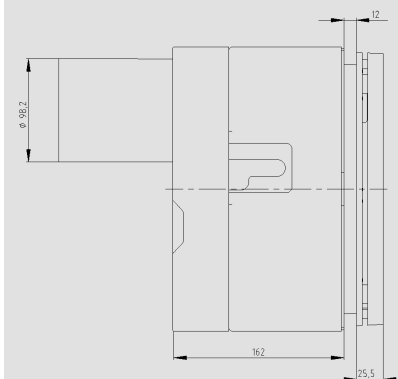
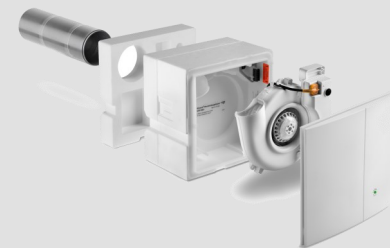
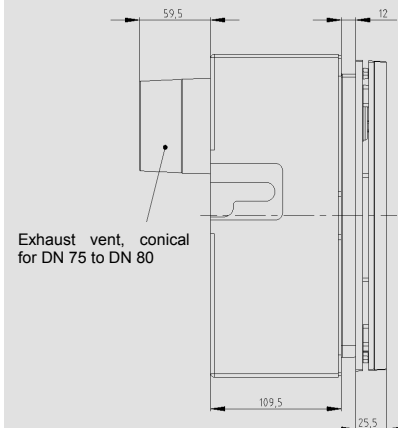
Further details

Product data
 Brand LUNOS
 Type 3/UP-AS10,7
 Order No. 039 832
 Type 3/UP-AS17,5
 Order No. 039 842
 Type Styrofoam adapter
 Order No. 039 841

Manufacturer's warranty: 2 years

Note

Products and illustrations may vary slightly. Due to continuous product development and/or several suppliers e.g. for raw materials, colours, among other things, may vary slightly or be shown differently in brochures.



E269 04.16 EN

Editing status: April 2016