

Surface-Mounted Housing 3/AP-B With Metal Shut-Off Device

Description

Housing for surface mounting made of UV-stable plastic, suitable for wall installation with rear exhaust vent (DN 80), leakage-airtight backdraft shutter and shut-off device K90-18017.

The exhaust vent is top left, however, the housing can be turned at a right angle, so that the exhaust vent is either top right, bottom left or bottom right. The adjustment of the backdraft shutter to the appropriate installation position is done by simply screwing the vent off and on.

All ventilator inserts of the Silvento series can be inserted into the surface-mounted housing.

Incl. mounting accessories and sound absorbers

Installation

Using the supplied drilling template holes for dowels and screws and the bore for the metal fire protection nozzle can be prepared. The installation of the housing is made by flush finish on the wall and ventilation using the Alu-Flex pipe DN 80 to the main line.

Please observe the installation manual and have the electrical connection of the fan performed by a qualified professional.

Accessories

Fire protection – shut-off device
8/BA
Alu-Flex pipe DN 80

Technical Data

Power supply 230 V AC 50 Hz
Dimensions (W x H x D) in mm
269 x 269 x 109.5
Available static pressure
216 Pa

The ventilation unit is provided with protective insulation; a protective conductor terminal is not required.

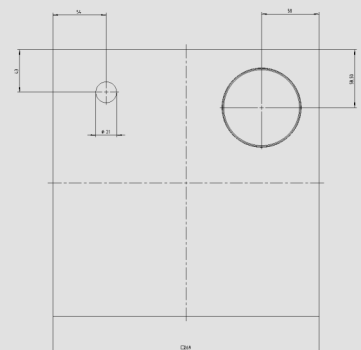
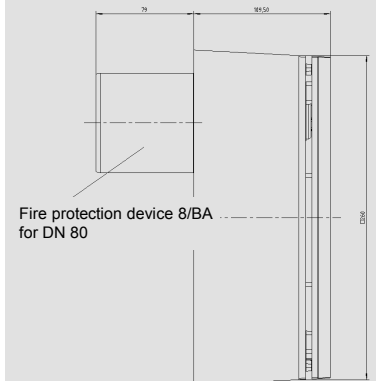
Further details

Product data
Brand LUNOS
Type 3/AP-B
Order No. 039 152

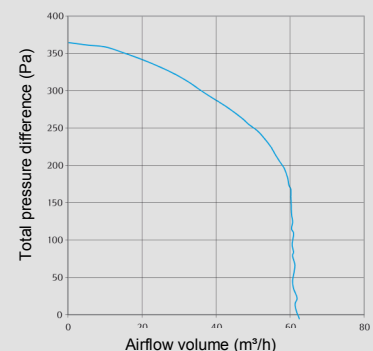
Manufacturer's warranty: 2 years

Note

Products and illustrations may vary slightly. Due to continuous product development and/or several suppliers e.g. for raw materials, colours, among other things, may vary slightly or be shown differently in brochures.



Pressure-volume characteristic curve



E265 04.16 EN

Editing status: April 2016